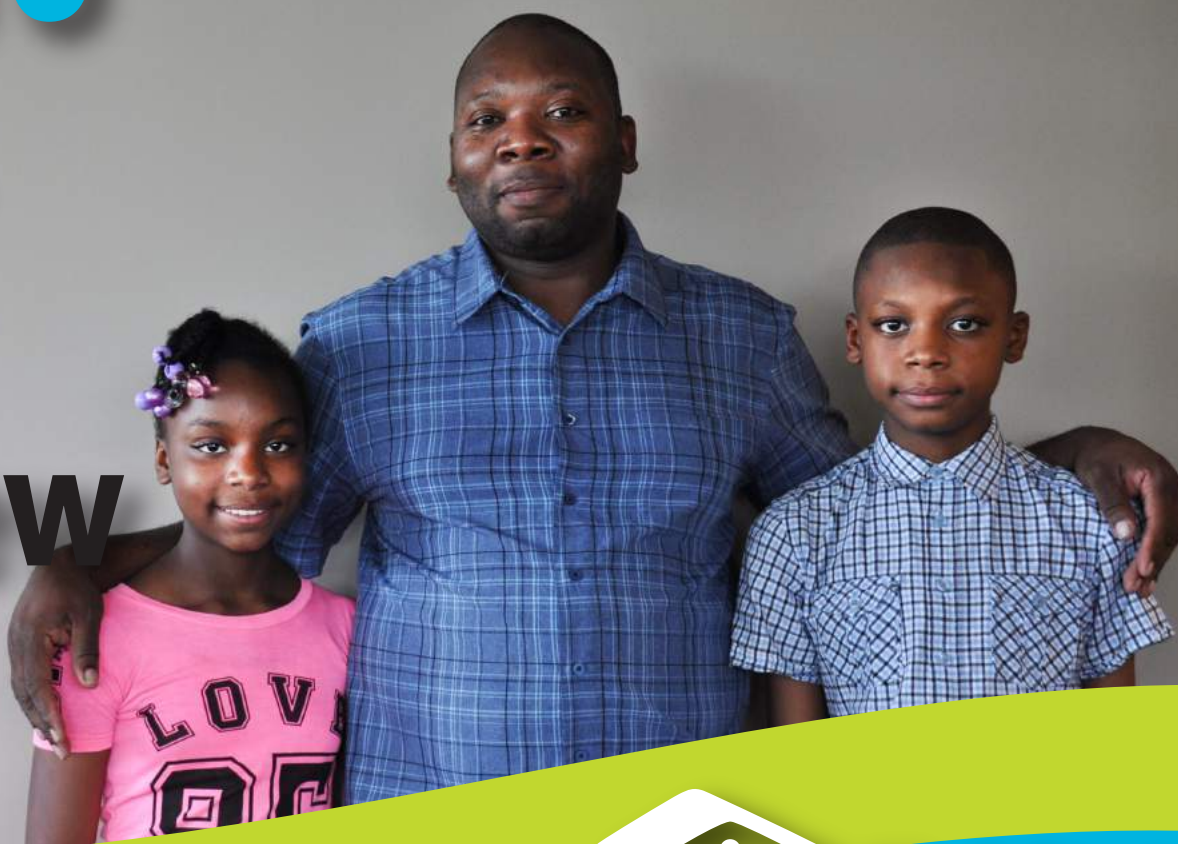




FY '16
a
year
in
review



Habitat
for Humanity[®]
Metro Maryland

Habitat's Newest Homeowners

about us



our mission

To build strength, stability and self-reliance through housing.

HFHMM supports the notion that good, stable housing matters for neighborhoods. Better quality of living leads to stronger citizens and families. Habitat for Humanity is about changing lives, one home at a time.

our vision

A community in which everyone has a decent place to live.



about us



our values

Advocacy
Collaboration
Community
Diversity & Inclusion
Empowerment
Faith
Family Parntership
Stewardship
Volunteerism

our board

Jeff Hollingsworth, Chairman
Loretta Sevier, Vice Chairman
Jeremy Colville, Treasurer
Mary LoGiudice, Secretary
Michael Clurman
Edward W. Hummers, Jr.
Marcus Meeks
Susan Miller
Stacey Milne
Ericc Powell
Mike Smith





Letter from the chairman

Fiscal year 2016 was another amazing year for HFHMM. We celebrated several milestones this year:

- This fall we dedicated the 90th house built or renovated by this affiliate! More than just completing the structure, I think back on the hundreds of new homeowners this milestone represents.
- This spring, we celebrated our 11th annual golf tournament. Over the years, our golf tournament has raised over \$1,000,000 to help build and renovate homes. Each year, a dedicated team of volunteers helped organize this event and then hundreds of golfers turn out to raise funds for Habitat, see old friends, and make new ones.
- We also celebrate that both ReStores (Rockville and Silver Spring) are doing well. We successfully moved one store from Gaithersburg to Rockville this year as our original lease expired. Quality donations remain the lifeblood of the stores. When you renovate, down size, or simply cleanup around the house, please donate your good used items to our stores. We are also excited to have started a partnership with Costco to pick-up returned items from their stores. In addition to helping Habitat we are also distributing items that don't fit our needs to several other charities in the area.
- We celebrate our dedicated staff. We are pleased to have a few staff members who have been with us for more than ten years. We are also proud that we pay all of our staff a living wage.
- We celebrate sustaining homeownership by helping individuals with major maintenance and accessibility needs. Projects this year included numerous furnace replacements, weatherization of 21 houses, and major renovation of a home to meet the needs of a veteran. Thank you to everyone who donated or volunteered this year! It is your contributions of time and treasure that moves homeownership from dream to reality for your neighbors.

Sincerely,

Jeff Hollingsworth

Jeffrey K. Hollingsworth
Board Chair
Habitat for Humanity Metro Maryland

our impact



completed projects

1982 - 2016

new construction	60
rehabilitation	30
weatherization	115
major & minor repair	119
international	148



our history

2016

300th Project Completed
Affiliate Office Moves to Silver Spring
Gaithersburg ReStore Moved to Rockville

2014

Silver Spring ReStore Opens
19 Maple Hill Townhomes Completed

2013

Changed Affiliate name to HFHMM

2011

Expanded to Include Prince George's County
1st Pride Build Sponsored Home

2008

24 Townhomes Completed in Burtonsville

2006

Gaithersburg ReStore Opens

2003

1st Multi-Unit Project completed in Forest Glen

1999

"House that Congress Built"
Beginning of Advocacy Initiative

1986

1st Home Completed in Sandy Spring

1982

HFH-MC is Established

START HERE

fy '16 by the numbers



52

**completed
projects**

**people
served**

67

32

**families
impacted**

fy '16 volunteer impact



\$980,048 value of total volunteer hours

41,598
total volunteer hours

4,600
number of volunteers
involved

ReStore



Rockville Grand Opening

After 10 years in Gaithersburg HFHMM moved its ReStore location to Rockville in February of 2016 and celebrated with a grand opening party for the community. Featuring music, games, food and great deals on items within the store, the grand opening celebration saw hundreds of people come to see the new location. The new ReStore is located at 1029 East Gude Drive in Rockville and officially opened its doors to the public on Monday, February 15, 2016.

With over 22,000 square feet of gently used furniture, appliances, tools, building supplies, antiques and more. ReStore has become a go-to destination for the community.



Habitat
for Humanity®
Metro Maryland

ReStore
Discount Home Improvement Center

global impact



Global Village

Over its four-year partnership with Habitat for Humanity El Salvador, HFHMM tithed over \$230,000 to the El Barrial Community. In addition, HFHMM brought 89 volunteers on Global Village trips to El Salvador and served 42 families in the El Barrial community.

In FY'16 HFHMM began tithing funds to Habitat for Humanity of Nepal.

HFHMM will be leading Global Village trips to both Nepal and Armenia in FY '17.



looking forward



Veteran's Repairs & Aging in Place

In FY 17, HFHMM plans to expand its Repair Program to focus in on two specialty areas; home repair for veterans and their families and Aging in Place.

Our Veterans and their families have given so much to us all. It is our intention to do all we can to give back and to thank our veterans and their families for their sacrifice. With support from the Home Depot Foundation, HFHMM hopes to partner with ten veteran families in FY17, ensuring that their homes are healthy, safe, and energy efficient now and into the future.

On average, 10,000 people each day in the US become senior citizens. Research has shown that most of these folks want to age in place in the homes they own. HFHMM will play a role in this solution. Over the next year, HFHMM will work together with a newly founded Design for Life Coalition to pilot an Aging in Place repair program. This program will focus on repairs that will allow seniors to live safely and independently in their homes. This program is innovative in that the Coalition includes a Senior Village which can provide post-repair support to seniors ensuring that they have access to programs that help with transportation, food security, and social isolation, allowing seniors to be successful in the long-term.

meet the mubarek's



The Mubarek family is a family of four – father, mother, and two children, ages 7 and 5. Mr. Mubarek and his wife moved to the U.S from Ethiopia 16 years ago, settling in Montgomery County six years ago. Prior to finding Habitat, the Mubarek's searched for an affordable house for years, wanting to find a home that would be more safe and healthy for their family.

When asked about how his new home will change their lives Mr. Mubarek said, "I am so blessed and thankful to go through the process and purchase the house with 0% interest rate; this is [a once in a] lifetime opportunity for me and my family."

"The kids...are so happy. Every day they ask about the basement, backyard, what color can they paint their rooms. I told them whatever they want, they're going to have it soon".



meet the grey's



The Grey family is a family of three – Father, Andrew, and his son and daughter. Andrew was born in Jamaica and currently lives in Prince George's County. When asked about his current living situation Mr. Grey said, "I want a more stable place. A place that I can call my own". Andrew was asked, "What do you want people to know about your family's story?"

He responded, "People who know my family know we are a close family – a hard-working family. The kids have not stopped asking questions about the house. When will we move in? How soon will it be? When can we see the house? They are so excited for their own rooms!".

"I want a more stable place. A place that I can call my own."



meet seble



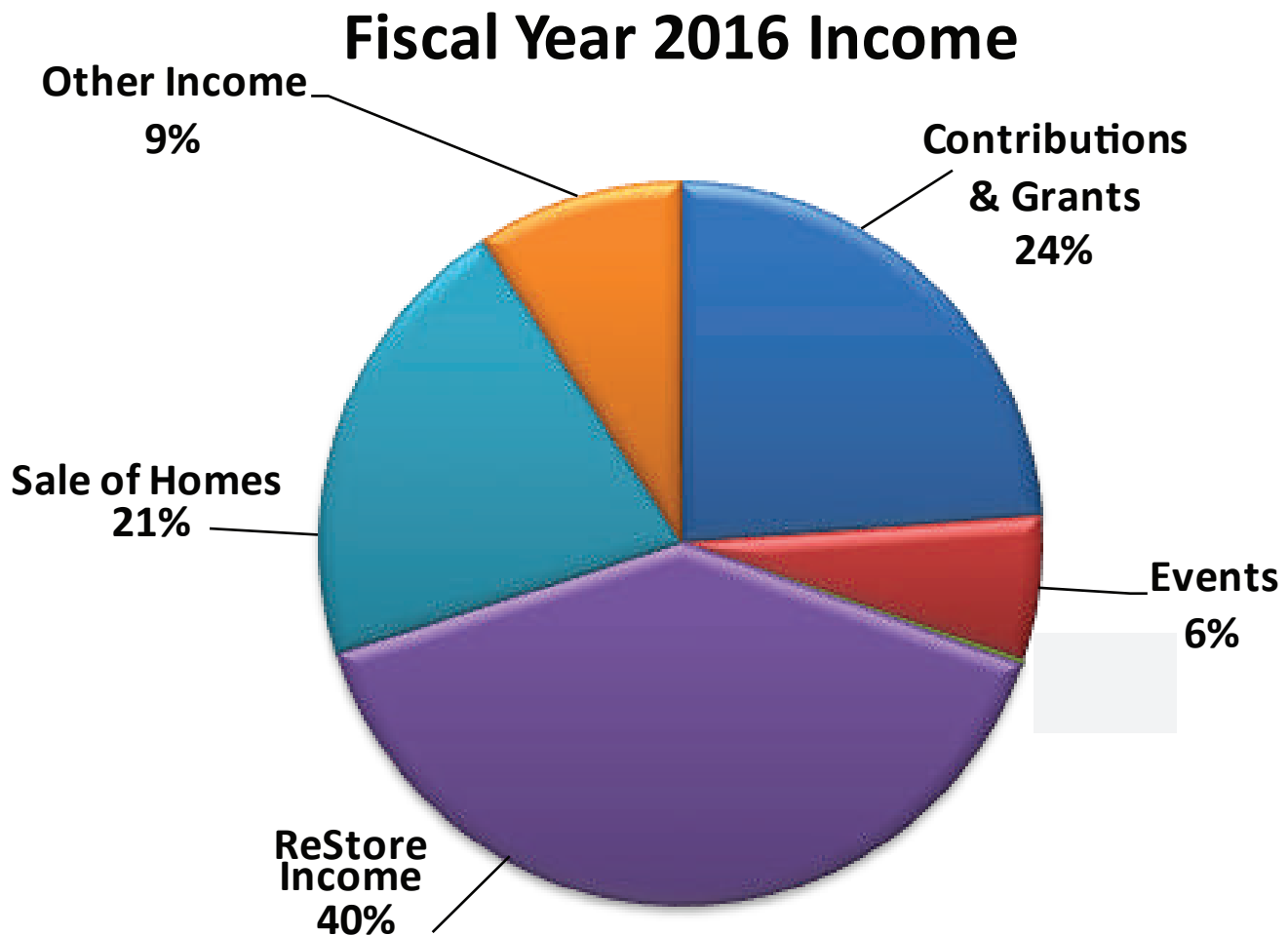
The Seyoum family is a family of two – Mother, Seble, and her 5 year old daughter. Seble was born in Washington, DC and grew up in Baltimore, MD. She graduated from the University of Maryland and has since lived in Montgomery County Maryland for more than 15 years. Prior to finding Habitat, Seble and her daughter were living in the basement of a house.

The lack of space was an issue for Seble who wanted her daughter to be able to have her own room. When asked what she thought when she received the phone call from Habitat saying that her family was selected to purchase a home, Seble said, “I was so excited and in disbelief My family was so excited. Everyone was silently wishing I could someday afford a house”.



**“Everyone was
silently wishing
I could
someday afford a
house.”**

fy '16 by the numbers

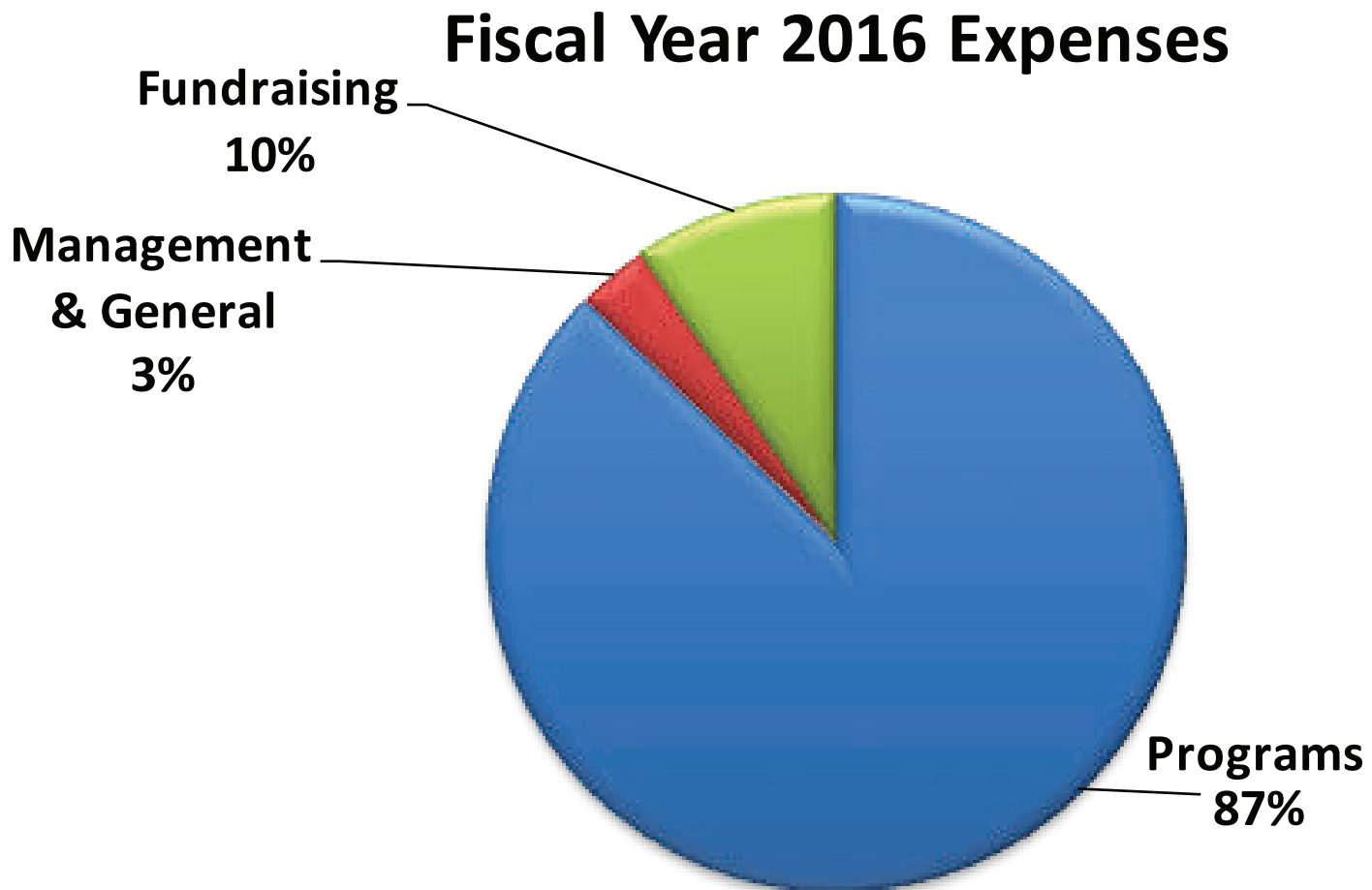


Fiscal year 2016 income

Contributions & Grants	\$929,585
Events	\$253,076
In-kind	\$11,215
ReStore Income	\$1,546,133
Sale of Homes	\$811,500
Other Income	\$361,560
Total	\$3,913,069



fy '16 by the numbers



Fiscal year 2016 expenses

Program	\$3,908,390
Management & General	\$149,655
Fundraising	\$421,556
Total	\$4,479,601

As part of our mission, Habitat for Humanity sells homes to partner families at zero percent interest. As such, GAAP requires us to record the mortgage discount amortization and mortgage discount expense on our P&L even though both are non-cash entries. **Thus a large portion of the apparent deficit for FY'16 is due to an accounting requirement and is not wholly a cash deficit for this fiscal year.**

2016 highlights



Women Build 2016

More than 150 businesswomen, builders, teachers and community leaders from across Montgomery and Prince George's County helped local families build a decent and affordable place they can call home during HFHMM's Women Build 2016 event. Raising nearly \$74,000 from over 600 individuals and businesses, 15 teams of women also committed a volunteer day on four build sites totaling 1,120 hours, helping to rehabilitate homes in Prince George's County.

Way to Go Ladies!





Women Build 2016

2016 highlights



11th Annual Golf Classic

On Friday, June 3, 2016, Habitat for Humanity Metro Maryland held our 11th Annual Golf Classic at the Whiskey Creek Golf Club in Ijamsville, Maryland. The nearly \$142,000 in proceeds raised from the event will directly help HFHMM continue its work of building decent & affordable housing for low-income families in Montgomery and Prince George's Counties. This year's event included an 18-hole round of golf at Whiskey Creek's award winning course, several golf contests, a silent auction, and a barbeque dinner. Funds raised from this year's golf classic will be invested in rebuilding and revitalizing vacant foreclosed homes in the local community.

Thank You to This Year's Sponsors:

*Mill Creek Residential Trust • Value Lighting • Host Hotels and Resorts • CohnReznick
Fidelity National Title Insurance Company • RLJ Lodging Trust • Elm Street Development
Bernard R. Wolfe & Associates, Inc. • RFC Framing • Telligent Masonry • Wolf Fire Protection
Katchmark Construction • Power Design • OB Builders • DARCARs • Freestate Electric
Champion Title & Settlements • Robert Charles Lesser & Co • ABC Supply Co • Moen • JBG
Ruppert Landscaping • Whiteford Taylor & Preston • DeLeon & Stang, CPAs
The Anderson Company LLC • Tim Horst • Natelli Homes • Bethesda North Marriott Hotel
Crisak, Incorporated • Washington Gas • Revolution Window Systems • Goldin & Stafford
Urban • ABC Supply Co • Urban Atlantic • Century Ford • R.W. Sullivan • Carfaro
Wise Moves • Richter & Associates • Don's Johns • Inter-State Gypsum Floors, LLC
Spirit Airlines • Simply Fresh Events*



11th Annual Golf Classic

2016 highlights



Home for a Hero Repair

On March 26th, 2016 Habitat for Humanity Metro Maryland and its project partners held a community event to celebrate the completion of a major repair project that revitalized a local Veteran's home. The repairs to the home included replacing the windows, doors, floors, walls, cabinets, appliances, as well as the hot water heater, furnace, and air conditioning unit. This was HFHMM's most extensive repair project to date. HFHMM's Director of Program Services, Sarah Reddinger, gave the opening remarks for the event, where she spoke to the group about the extensive work that HFHMM performed on the home, as well as the impact that the homeowner, Fred, has made on his community.

Fred served two tours during the Vietnam War, and now works to better the lives of other Veterans. Fred told his inspirational story and spoke of how the work on his home will transform his life. When asked what he was most excited for with the project's completion Fred responded, "Honestly, enjoying a stove, there hasn't been a working stove in this house for over ten years". The program concluded with a ceremonial raising of the American flag by the homeowner and members of Team Rubicon who volunteered on the project.



Home for a Hero Repair

2016 highlights



11th Annual Golf Classic

On Friday, June 3, 2016, Habitat for Humanity Metro Maryland held our 11th Annual Golf Classic at the Whiskey Creek Golf Club in Ijamsville, Maryland. The nearly \$142,000 in proceeds raised from the event will directly help HFHMM continue its work of building decent & affordable housing for low-income families in Montgomery and Prince George's Counties. This year's event included an 18-hole round of golf at Whiskey Creek's award winning course, several golf contests, a silent auction, and a barbeque dinner. Funds raised from this year's golf classic will be invested in rebuilding and revitalizing vacant foreclosed homes in the local community.

Thank You to This Year's Sponsors:

*Mill Creek Residential Trust • Value Lighting • Host Hotels and Resorts • CohnReznick
Fidelity National Title Insurance Company • RLJ Lodging Trust • Elm Street Development
Bernard R. Wolfe & Associates, Inc. • RFC Framing • Telligent Masonry • Wolf Fire Protection
Katchmark Construction • Power Design • OB Builders • DARCARS • Freestate Electric
Champion Title & Settlements • Robert Charles Lesser & Co • ABC Supply Co • Moen • JBG
Ruppert Landscaping • Whiteford Taylor & Preston • DeLeon & Stang, CPAs
The Anderson Company LLC • Tim Horst • Natelli Homes • Bethesda North Marriott Hotel
Crisak, Incorporated • Washington Gas • Revolution Window Systems • Goldin & Stafford
Urban • ABC Supply Co • Urban Atlantic • Century Ford • R.W. Sullivan • Carfaro
Wise Moves • Richter & Associates • Don's Johns • Inter-State Gypsum Floors, LLC
Spirit Airlines • Simply Fresh Events*



11th Annual Golf Classic

sponsoring organizations

\$50,000 +

Fannie Mae
HFHMM ReStores
Maryland Energy Administration

\$25,000 +

Bank of America
DARCARS Automotive Group
J. Willard & Alice S. Marriott Foundation
Montgomery County Council
Morris & Gwendolyn Cafritz Foundation
RLJ Lodging Trust
United Way

\$10,000 +

Capital One
Clark-Winchcole Foundation
CohnReznick, LLP
ICMA Retirement Corporation
Mill Creek Residential Trust
Maryland Affordable Housing Trust
Value Lighting, Inc.

\$5,000 +

Benevity Community Impact Fund
Elm Street Development
Emergent BioSolutions
Fidelity National Title Insurance Company
George Wasserman Family Foundation, Inc.
The Home Depot Foundation
Host Hotels & Resorts, L.P.
Jones Lang LaSalle
Katchmark Construction, Inc.

\$5,000 +

LF Associates LLC
Lowe's Charitable & Educational Foundation
MacroGenics, Inc.
Marriott International, Inc.
OB Builders, Inc.
Power Design, Inc.
RFC Framing, Inc.
Richard E. & Nancy P. Marriott Foundation
Robert Bensen Meyer Jr. Foundation, Inc.
Singhal & Company, Inc.
Telligent Masonry, LLC
University of Maryland Foundation
WILLCO
William E. Cross Foundation
Wolf Fire Protection, Inc.

\$1,000 +

ABC Supply Co, Inc.
American Methodist Episcopal Church
Ameriprise Financial
The Anderson Company, LLC
Artery Capital Group, LLC
Bank of Georgetown
Barbara Vivian Goldstein Revocable Trust
BB&T
Bentall Kennedy
Bethesda United Methodist Church
Bozzuto Construction Company
Bradley Hills Presbyterian Church
Breedon Mechanical, Inc.
CARS Foundation
CAS Engineering
CBG Building Company
CBRE Investment Properties
Champion Way Foundation

sponsoring organizations

**Champion Way Foundation
Choice Hotels International Foundation
Coffey Consulting, LLC
Colt Builders
Damascus United Methodist Church
DeLeon & Stang
Deloitte
DPR Construction
EagleBank
Eastern Applicators, Inc.
ECS - Mid-Atlantic, LLC
Embassy of the United Arab Emirates
Erickson/Riderwood Retirement Village
Faith United Methodist Church
Fidelity Charitable
Fine Earth Landscape, Inc.
First National Bank
Foulger-Pratt
Fourth Presbyterian Church
Freestate Electric
Green Village Concrete, Inc.
GTM Architects
High Concrete Group
Hopkins & Porter Construction, INC.
ICRI, Baltimore Washington Chapter
IET Corporation
Industrial Bank
JBG Companies
Kaiser Permanente
Kay Family Foundation, Inc.
Marc Fleisher Group
Maximus Foundation
Miller & Long Construction Co.
Moen
Monument Bank**

**Newmark Grubb Knight Frank
Occidental Grill & Seafood
Paragon Title & Escrow Company
Parsons Government Service
Prince George's County Government
Prince of Peace Lutheran Church
Qiagen Sciences, LLC
Robert Charles Lesser & Co., LLC
Ruppert Landscape
Sandy Spring Bank
Sandy Spring Builders
Saint Mark Presbyterian
Schwartz Sievers Anolia Engineering, LLC
Silver Spring Presbyterian
Simply Fresh Events
Spirit Airlines, Inc.
TESSCO
Thrivent Financial
TW Perry
Unified Email, LLC
Valspar
Walter Johnson High School
Whiteford, Taylor & Preston
Women Missionary Society of African**

sponsoring organizations

Under \$1,000

Amalfi Ristorante
Amazon Smile Foundation
As Kindred Spirits
AT&T Services, Inc.
Atlantic Coastal Cooling and Heating
Avery Corp.
Bell South Corporation
Bonefish Grill - In-kind
Carfaro, Inc.
Century Ford of Mt. Airy
Chain Bridge Bank
Charles P. Johnson & Associates, Inc.
Cherry Hill Park, LLC
Chesapeake Building Components, Inc.
Chevy Chase United Methodist Church
Chipotle Mexican Grill
Cigars International - In-kind
Clarksburg High School
Clover Carpet Co.
Clyde's - In-kind
Consolidated Waterproofing
Contractors, Inc.
Cook Ross
Crave - In-kind
D & J Culbertson Insurance, Inc
Darnestown Presbyterian Church
DBA C & P Applique Guild
Distinctive Art Source
Don's Johns
DoTopia
Douglas Construction Group, LLC
ECS Mid-Atlantic, LLC
Electrical Design, Inc.
Fairhaven United Methodist Church
Farmers Mutual Fire Insurance
Company of Salem County
Flagship Car Wash Center, Gaithersburg
Gaithersburg Equipment Co.
G&H Welding & Fabrication, Inc.
GeoConcepts Engineering
Giant Food LLC
Global Mission Church
Goldin & Stafford, LLC
Good Hope United Methodist Church
Granite City Food & Brewery, LTD
Grillmarx LLC
Growlers Brew Pub - In-kind
GT Olney LLC

Holy Cross Church
Hodo's Diamond Detailing
Kenwood Country Club - In-kind
Lahinch Tavern and Grill - In-kind
Luby's Fuddruckers Restaurants, LLC
- In-kind
Madison Wealth Management
McClintock Distilling - In-kind
Miller's Ale House - In-kind
Mosaic Bistro - In-kind
Mykonos Grill - In-kind
Natelli Homes L.L.C.
Not Your Average Joe's, Inc. - In-kind
O'Donnells Market
Olney Grille - In-kind
Paint Branch Unitarian Church
Universalist Church
Pennyworth Shop of the Grace
Pharmaceutics International, Inc.
Renaissance Hotel
Ricar Enterprises LLC, Ledo Pizza
Richter & Associates
Rockville United Church
Rolling Acres Landscaping
Safeway - In-kind
Schwab Charitable Fund
Seasons 52 - In-kind
Silver Spring United Methodist Church
Skintuition - In-kind
St. Francis Church
St. Luke's Lutheran Church
Structura
Studio Z Design Concepts, LLC
SuGo Cicchetti
Sumil Shah Foundation for Children
Tally-ho - In-kind
Temple Beth Ami
The Bottle Shop - In-kind
The Fresh market - In-kind
The Grilled Oyster - In-kind
The Hamilton - In-kind
The Irish Inn at Glen Echo - In-kind
The K Foundation
The Melting Pot - In-kind
Thomas S. Wootton High School
Timpano's - In-kind
Tony & Joe's - In-kind
U.S. Charitable Gift Trust
Uncle Julio's Fine Mexican Food - In-kind
United Way of Aiken County, Inc

United Way of Frederick County, Inc.
Urban Engineering, Inc.
Vows and Wows - In-kind
Washington Street Realty LLC
Wegmans (Germantown) - In-kind
Wells Fargo Foundation
Westat
Westlake Drive Pizza, Inc. - In-kind
Wise Moves
World Vision
Zohra - In-kind
Zuckerman Gravely Management, Inc.

individual donors

\$5,000 +

Lutie Semmes
Michael Clurman

\$1,000 +

Anthony Detrick
Caroline Bolas
Edward W. & Martha Hummers, Jr.
Elizabeth Harvey
Ericc Powell
Harold Amos
Hobie Cohen
James Crawford
Jeff & Shayna Dee
Jeff & Petrina Hollingsworth
John Cowan
John Kessler
John & Beverly Paukstis
Kathleen Johnson
Kelli Powell
LeeAnne Gelletly
Loretta Sevier
M.B. Robichaud
Marcus Meeks & Rachel Cornwell
Mary LoGiudice
Matthew & Heather Ahrens
Michael Rafter
Michael Smith
Mike Cleveland
Mimi and Michael Kress
Nancy and Robert Gerlach
Nicholas Olcott
Patricia Harvey
Powell Lindsay
Robert Brewer
Rosemarie Gramlich
Samuel Rose
Stacey & Andrew Milne
Susan Reutershan
Susan Miller
Thomas Albert
Tom Moran
Victoria Davis
William & Charylann Maas
William Roberts
William Sledge

Under \$1,000

A. Ray Parrack
A.J.D. Schmidt
Adrienne Price
Aj Nuciforo

Al Policicchio
Alan Kerxton
Alan Mayers
Alan & Ruth Vinitzky
Allan Anderson
Allen Deleon
Amanda Konradi
Amber Bullock
Amber Lorenzen
Amy Kominski Benedick
Amy Fleming
Anne Gunsteens
Brian Cox
Brian Dougherty
Bruce Johnson
Bruce Smith
Buck Bartley
Burton Bachrach
Calley Ordoyne
Campbell Valerie
Caren Bach
Carl Shea
Carol Cichowski
Carol Yates
Caroline Herbert
Caroline Mitchell-Boxwell
Carolyn Benson
Celeste Suza
Charlene Lacovaro
Charles Smith
Charles Burdick
Chip Shewbridge
Christina Johnson
Christina Mitchell
Clarence Hickey
Corey Floyd
Courtney Smith
Craig & Victoria Thweatt
Crystal Gilbert
Cynthia Price
Cyrus Baktash
Daisy McTighe
Daniel Dollarhide
Daniel Gallagher
Daniel Niyomsub
Darci Pickering
David Brown
David Bennett
David F. Godoy
David Kern
David Landsman
David Lukcso
David Shapiro
Dawn Doeblor
Debbie Copeland

Deborah Dwyer
Deborah Lewin
Deborah Singleton
Deboshree Chatterjee
Debra Ornstein Jacobs
Della Scott
Delwin Brockett
Denise Dougherty
Dennis Hlavka
Dennis Linders
Diane Defries
Donald Cuming
Donald & Elizabeth Henderson
Donald MacGlashan
Donald Turnbull
Donald Woodruff
Donna Hall
Donna Horoschak
Donna Page
Dorie Newman
Doris Stokes
Dorothy Doll
Dorothy Gerald
Douglas Ludwig
Duane Schmidt
Duane Thuraingham
E.M. Gifford
Earnie & Betsey Williamson
Eather Chapman
Eddie Bharucha
Edith Holleman
Edward Korn
Edward & Anne Tsoy
Elaine Feidelman
Elaine Hope
Elaine Sheppard
Eleanor Fisher
Elisabeth Courtner
Elizabeth Pakenas
Ellen Antholis
Emily Kiernan Solomon
Eric Cohen
Ethelyn Bishop
Eugene Ebert
F. Gordon Maxson
Fenwick & Kathleen Yu
Fillmer Ruegg
Filogonio Ruiz
Florence Hunt
Florence Vorrone
Frances Sharples
Francie Brady
Francis Chavarria-Aguilav
Francis Chiaramonte
Frederick Brown

Gabriel Derosier
Gail Maidenbaum
Garry Gaylord
George Loeb
George Sushinsky
George Williams
Gerald O'Neill
Geraldine Matise
Gerry Haughey
Gilbert Mottla
Goodwin Ting
Govind Deshpande
Grace Kimm
Graham Johnson
Greg Brooks
Gregory Campbell
Gregory Shutak
Guinevere Miles
Gunvald Moen
Gutheria Sanders
Hally Childs
Hamza Neim
Harrell Gillis
Harriet Powell
Harvey Karch
Henry Clarke
Howard Epstein
Howard & Lois Robins
Ila Deen Olson
Irene Dent
Irene Pruitt
Irving Jacobs
Ishrat Husain
J O'Malley
Jacqueline Scafidi
Jacqueline Stover
James Begis
James Butler
James Fox
James Kelley
James Lewis
James Pearson
James Robinson
James Salander
James Togashi
James Tortorella
James Vidas
Jamie Gravino
Jan Vincent Sengers
Jane Rostov
Janelle Marie Ott Long
Janet Ardam
Janet Levy
Janice Pohlman
Jay Groff

individual donors

Under \$1,000

Jeanne Gildea
Jeffrey Kottmeier
Jennifer Miles
Jennifer Seiler
Jeremy & Nora Kisch
Jessica Reid
Jim Judy
Jim & Denise Swink
Joan Rosenstein
Joan Searby
Joan & Alister Bell
JoAnne Thweatt
Joe Gitchell
John Anderson
John & Suzanne Clark
John & Katherine Clements
John & Mary Euler
John Gaffney
John Gerwig
John Gilbert
John Keiser
John Lippincott
John Purdy
John Ryan
John Spencer
John Wing
John Zinner
Joseph Feinberg
Joseph Howard
Joseph Massi
Joseph Miller
Joshua Rozen
Juanita Hendriks
Judith Duffie
Judith Heimann
Judith Walser
Judith Hundertmark
Jules Goldspiel
Kanwisher Susan
Karen Cannon
Karen Gibson
Karen MacIntyre
Katherine Boarman
Katherine Emrisek
Katherine Mullen
Katharine Stell
Kathleen Curtis
Kathleen Reed
Katie Better
Katie Ashmore
Kenneth Austin
Kenneth Gordon
Kenneth Halperin

Kenneth Paretzky
Kenneth Phifer
Kenneth Wood
Kevin Brenneman
Kevin Kieffer
Kim Brown
Kozey Kozey
Kristin Urban
Kristen Woodruff
L Doyle
Larry Twigg
Laszlo Urban
Laura Heimberg
Laura Weigle
Lauren Hetrick
Laurence Cafritz
Lawrence Kaufman
Lawrence Margasak
Lawrence Shulman
Lawrence Wechsler
Leland Piper
Leonard Schuchman
Lily & David Chui
Leslie Consroe
Leslie Cronin
Leslie McNair
Lewis Morris
Lilly Lievsay
Linda Brown
Linda Engel
Linda French
Linda Leary
Linda Perle
Linda Worthington
Lise Tracey
Lois Fried
Lois Ann Gutowski
Long Ong
Lori Hodsoll
Lorraine Minor
Luanne Kovalcik
Luther Tollefson
Lydia Liferiedge
Lynn Beachler
Lynn Louison
Lynne Larkin
M.K. Staudahe
Makiko Deniz
Marcia Rohrer
Marco Vonhof
Margaret Iwamoto
Margaret H Bradford
Margaret Cromelin
Margaret & David Dikel
Margarita Covarrubias

Margery Edmundson
Marie Yenko
Marie Racz
Margretta Diemer
Marilyn Biery Mitchell
Marilyn Greenwood
Marilyn Lundquist
Marilyn Pearl
Marjory Donn
Mark & Loretta Sherringham
Marlene Schwartz
Marlene Shaul
Marlin Strand
Martha Hunt
Martha Nebb
Martin Burns
Martin Faigin
Marvin Tabb
Mary Boyle-Marlow
Mary Foster
Mary Griffin Williams
Mary Soto
Mary Von Euler
Maryann Dillon
Mary-Margaret Bradley
Matthew Bode
Maurcia Brown
Maureen Wynne Zutz
Maureen Young
Maury Gittleman
Mayo Friedlis
Melanie Kim
Melanie Rodriguez
Melissa Skolfield
Merritt Techter
Michael Bucci
Michael & Wendy Kail
Michael Plantamura
Michelle Diamant
Mike Pfetsch
Miles Haber
Milton Axley
Mitchell Silberg
Monardes Noel
Monica Bradford
Morgan Sullivan
Nancy Ferrant
Nancy Flowers
Nancy & Glenn Ochsenreiter
Nancy Schrider
Nathan Hauser
Ngoc Phan
Norman Leventhal
Norman Taylor
Oliver Brassard

Owens Living Trust
Pamela Israel
Pamela Roddy
Patricia Adams
Patricia Baig
Patricia Caudill
Patricia Most
Patricia Silber
Paul Eggers
Paul Rick
Paul Segel
Paul & Ruth Anne Thran
Paulette Goodman
Penny Gaston
Penny LeRoy
Peter Clute
Peter & Linda Crisafulli
Peter Grace
Peter Hopkins
Peter Klaassen
Phillipa Taylor
Phyllis Norrie
Priscilla Campbell
Priscilla Sabino
R. J. Verfueth
R. Jeffrey Godwin
Rachel Simon
Rajamani Muralidharan
Randi & Elliot Liffman
Raymond Bass
Ray Fetterer
Raymond Luczak
Raymond Von Saunder
Rebecca Griffin
Renee Christy
Rennie Stern
Richard Darilek
Richard Farrar
Richard Katon
Richard Miller
Rita Furst Seifert
Rivka Yerushalmi
Robert Friedland
Robert Greeves
Robert Grigg III
Robert Hackman
Robert Humphreys
Robert Ekman
Robert Kim
Robert Moore
Robert Nugent
Robert Obenreder
Robert Orndorff
Robert Pinsker
Robert Turner

individual donors

Under \$1,000

Robert Versluis
Roberta Augustine
Roberta Buckberg
Roberta Williams
Robin Gross
Robin Lawson
Robin Sorkin
Rochelle Rosenfeld
Rodney Frink
Roger Brown
Roger Simmons
Ronald Apatoff
Ronald Brownstein
Ronald Luther
Ronald Kleinman
Ronald Pomerantz
Ronald & Jane Stern
Ronita Geckle
Rosalie Barr
Saba Gebremariam
Sally Jones
Sandra Herbert
Sarah Bugbee
Sarah Katz
Sarah Zewatsky
Scott Hardy
Mr. & Mrs. Scott Miller
Scott Wolpert
Sears Holly
Seret Williams
Shalon Santana
Shane Hennessy
Shaun Donnelly
Sheldon Kryz
Sherry & Peter Frank
Sherry Marshall
Son Hwa Chang
Stephanie Corona
Stephen Brannan
Stephen Garvey
Stephen Lehrman
Stephen McClung
Stephen Lehrman
Stephen Spano
Stephen Turow
Steven Sherman
Struan Robertson
Stuart & Frances Taylor
Susan Cowart
Susan Haines
Susan Jack
Susan Kanwisher
Susan Milligan

Susan Segal
Susan Smart
Susan Szajna
Susan Wellman
Tanisha Williams
Terri Jo Hayes
Theresa Anderson
Thomas Applin
Thomas Fleisher
Thomas Lavalla
Thomas Lewerenz
Timmi Aray
Timothy Horst
Timothy Strohmer
Todd Easton
Todd Schenk
Tom Worden
Troy Agnew
Tufail Ahmad
Tyler Abrams
Ursula Kelnhofer
Venkataraman Srinivasan
Vicki Bowen
Vida Yazdi
Vivian Woods
Walid Mourad
Wallace Knutsen
Walter Retzsch
Wanda Vangoor Rev. Trust
Warren Howard
Wayne Rasband
Wendell Mohr
Wendy Morris
William & Margaret Cochrane
William Samuel
William Johnston
William McCloskey
William Perry
William Rutsch
William Samuel
William Teng
Wini & Roger Frye
Yoshitatsu Sei
Yvette Bowser
Zori Ferkin

Every effort has been made to ensure the information included is accurate and reflects the wishes of the donor. In spite of our best efforts, errors and omissions can occur.

Please let us know if we should correct our records by directing questions or comments to Jeff Dee, Director of Development at Jeff.Dee@HabitatMM.org or 301-990-0014 ext. 20



Habitat
for Humanity®
Metro Maryland

[www. HabitatMM.org](http://www.HabitatMM.org)
8380 Colesville Road, Suite 700
Silver Spring, MD 20910
301-990-0014